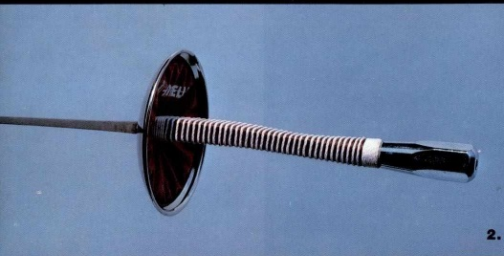


SANTELLI

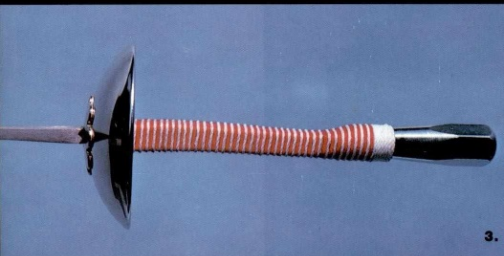




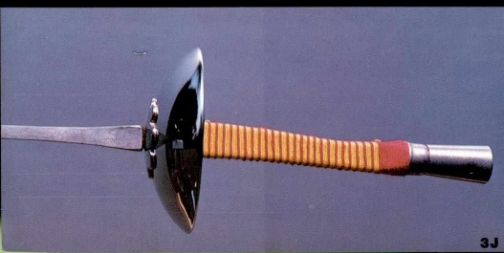
1.



2.



3.



3J



4.



7.

FOILS

All Santelli foils are made with imported blades of French or Italian manufacture. The no. 1 foil is mounted with a leather handle and either a steel or aluminum 4" guard. The no. 2 foil has a cord wound handle and a 4" steel guard. The no. 3 foil is mounted with a 3 1/2" steel guard as is the no. 3J which is balanced for youngsters with a shorter and lighter blade, handle and pommel.

1. French foil, Championship
2. French foil, Santelli model
3. French foil, Collegiate
- 3J. French foil, Junior model
4. Italian foil

Please specify right or left handed.

FOILS

ALL PISTOL GRIP foils are available with either 4" steel or aluminum guards. Probably the most popular is the Belgian pistol grip, but there are a variety of others from which you can choose.

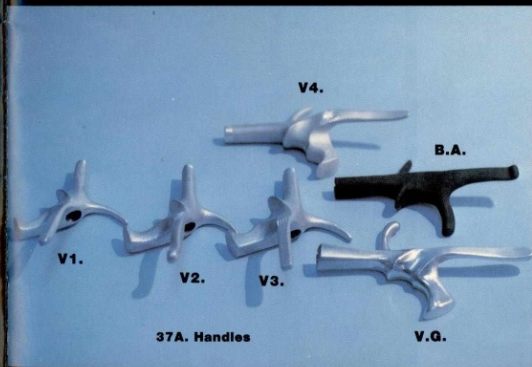
5. Belgian foil w/plastic grip*
- 5BA. Belgian foil w/aluminum grip*
7. German Visconti foil
- 7N. Italian Visconti foil**

* Both no. 5 and 5BA can be had in the "American" model, that is with the rear lower prong removed.

** The Italian Visconti grips come in 4 sizes: V1. "Bambino" V2. "Slim line" V3. "Medium foil" V4. "Epee".

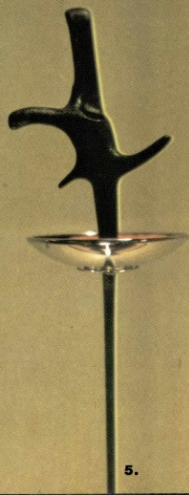
*** Other 37A grips: BA, Belgian Aluminum. V.G. German Visconti.

Please specify whether for right or left handed fencer.



37A. Handles

V.G.



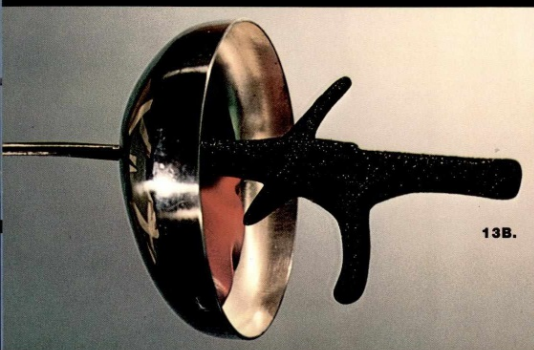
5.



19. through 41.



13G.

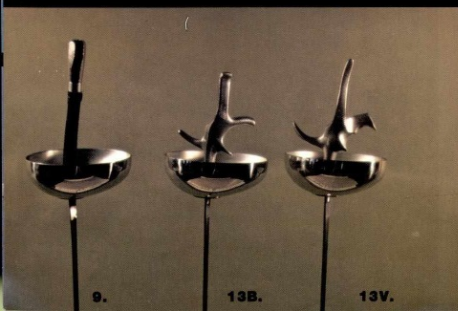


13B.

STANDARD BLADES AND WEAPON PARTS

19 through 41.

Consult your price list for descriptions.



9.

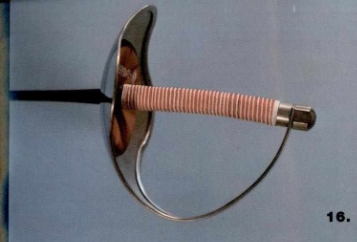
13B.

13V.

Santelli EPEES are beautifully balanced weapons that are assembled by fencers for fencers. Any of the pistol grips shown on the prior page can be selected but the 13B and 13V epees shown have proven to be the top choice for most epeeists.

- 9. French epee
- 11. Italian epee (not shown)
- 13. Pistol grip epee, aluminum grip of your choice.
- 13B. Shown with Belgian aluminum handle.
- 13V. Shown with Italian Visconti epee handle.
- 13G. Shown with German Visconti epee handle.

Please specify whether for right or left hand.



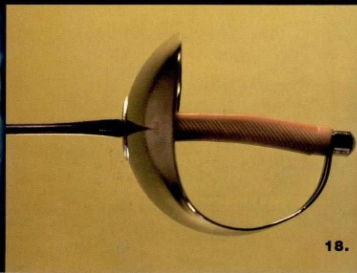
16.



17.



17T.



18.

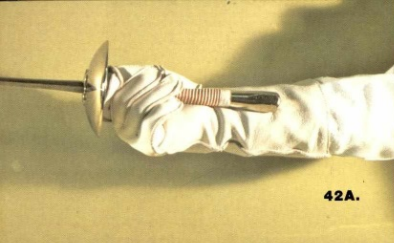


SABRES

IF ANYONE KNOWS HOW A GOOD SABRE SHOULD FEEL, IT'S THE MAESTRO HIMSELF, who, believe it or not, still puts the final balance in just about every sabre that we ship. He calls this "loading them with touches." The no. 17 and no. 17T sabres are leathers. The no. 16 and no. 18 are a bit heftier, but still beautifully balanced.

- 16. Hungarian sabre, with cord or plastic handles only
- 17. Santelli "Special" sabre
- 18. Olympic sabre, with cord or plastic handles only
- 17T. Tournament sabre

Please specify whether right or left.



42A.



42.



44.



45.



43.

GLOVES

A Santelli glove fits like . . . well, a glove. From the basic foil glove (chamois, no. 42) to the top of the line no. 46 3-weapon glove, you get the best in leather, sewing and design.

Outside seams eliminate any pressure on the fingers. Soft supple deerskins give the comfort a fencer needs. The no. 45 and 46 gloves with snug stretch nylon cuff are perfect for epee and sabre as well. For those who want more protection, the no. 43 and 44. For simplicity, the rugged no. 42 and the stylish 42A.

42A. Foil glove, white supple deerskin

42. Foil glove, tan chamois

43. Foil-sabre glove, tan chamois with padded cuff

44. Foil-sabre glove, white, lock-stitched with reinforced palm

45. Foil-epee glove, tan chamois with elastic cuff

46. 3-weapon glove, all white with elastic cuff and reinforced palm

sizes 6, 7, 8, 9, 10

Please specify for right or left hand.



46.



47I.



48.



49.

MASKS

Santelli masks lead the field in quality and design. Fabricated of .041 steel mesh on adjustable spring steel frame. Galvanized against rust. Black inner coating assures glarefree maximum vision. Available from stock with detachable padded bib. Can be ordered with permanent stitched-in bib at no extra charge. Masks no. 48 and no. 50 trimmed in natural color cowhide. Also available in white leather — see price list.



47.



50.

47. Foil-epee mask, handsewn, white leatherette with detachable bib

49. Foil mask, collegiate model, wire-stitched, white leatherette with detachable bib

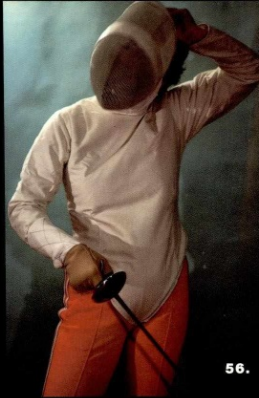
47I. Foil mask, international model, insulated with stitched-in bib

48. Three-weapon mask with cowhide trim and detachable bib

50. Sabre mask with cowhide leather trim and detachable bib



53.



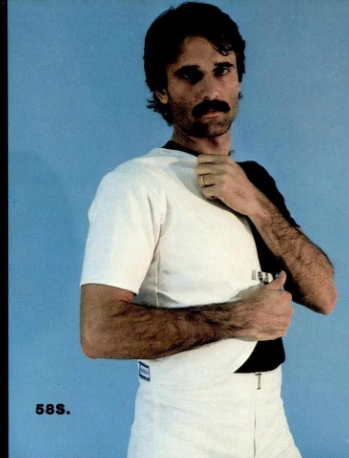
56.



54.



58.



58S.

TRAINING JACKETS

53. Men's practice jacket, 10 oz. pre-shrunk duck, back zipper, can be used for training or competition. Sizes S-M-L-XL.
54. Men's half jacket, 10 oz. pre-shrunk duck, adjustable side straps. For training or class work. Sizes S-M-L-XL. Reversible for left handers.
56. Women's practice jacket — perfect for class work or competition. Padded with pockets for breast plates and back zipper. Sizes S-M-L-XL.
57. Women's half jacket — padded, one sleeve jacket — for training or class work. Reversible for left handers (no inner pockets). Sizes S-M-L-XL.
- 53J. Boy's and girl's practice jacket, padded duck. Sizes X-X-S, X-S, S.



57.

53J.



58I.

PLASTRONS

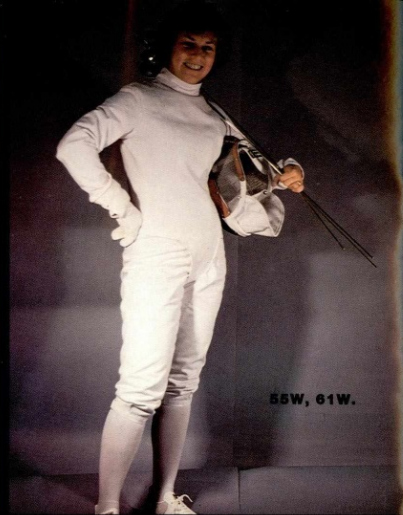
58. Plastron (quilted chest protector) for class training. Reversible for lefties. Sizes M-L-XL.
- 58S. Underarm protector (required in all tournaments). Sizes S-(32-36) M-(36-40) L-(42-44) XL-(46-48). Reversible for lefties.
- 58I. Instructor's plastron — padded 14 oz. duck with leather covering. Specify right or left handed.





51V, 59.

52, 60.



55W, 61W.

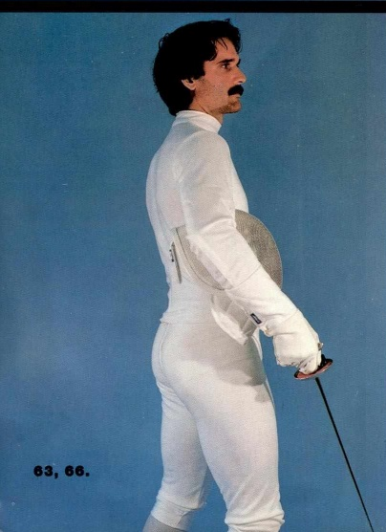


All Santelli uniforms are manufactured on the premises of the finest U.S. fabrics available. The materials are pre-shrunk, and the jackets and knickers are designed to give you comfort, safety, durability and style. The key-note is again fencers designing and manufacturing for fencers. We know what you want.

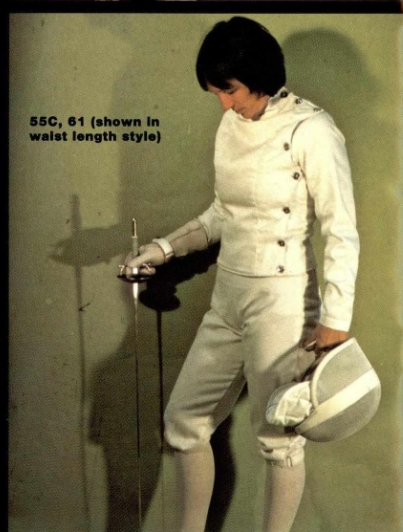
Custom tailoring is also offered. Please consult your price list.



64, 66.



63, 66.



55C, 61 (shown in waist length style)

COMPETITION JACKETS

- 51V. Men's 3 weapon jacket, 14 oz. duck, velcro closure
 - 64. Men's 3-weapon jacket, 100% nylon stretch, front zip
 - 52. Men's foil jacket, 10 oz. duck, side buttons
 - 63. Men's foil-sabre jacket, 100% nylon stretch, front zip
 - 52B. Men's sabre jacket, padded 10 oz. duck, velcro closure
 - 55W. Women's 3-weapon jacket, padded 10 oz. duck, velcro
 - 62. Women's 3-weapon jacket, 100% nylon stretch, front zip
 - 55C. Women's foil jacket, padded 10 oz. twill, side buttons
- *Jackets no. 63 and 52b are waist length.
All others are groin length, but can be had cut to waist at No extra charge.
- Sizes: Men's jackets 34 to 48
Women's jackets 32 to 42
- Note: Because of the heaviness of fabric, and/or padding, it is advisable to order jackets no. 51V, 52B and 55W a size larger than you would normally wear.

Please specify right or left handed.



(Also featured
69. Bag
80V. Strap)

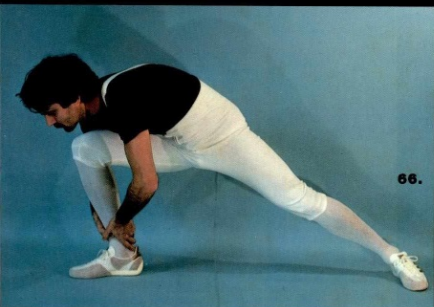
62, 65



KNICKERS

- 59. Men's 3-weapon knickers, 14 oz. duck
- 66. Men's 3-weapon knickers, 100% nylon
- 60. Men's foil-sabre knickers, 10 oz. duck
- 61W. Women's 3-weapon knickers, 10 oz. duck
- 65. Women's 3-weapon knickers, 100% stretch nylon
- 61. Women's foil knickers, 10 oz. twill

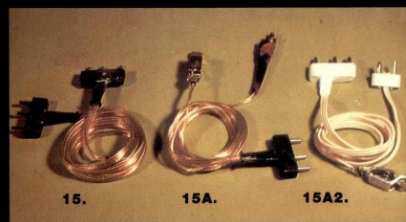
Size information: no. 59 and 60 knickers available in sizes 28 through 40. No. 61W and 61 in sizes 22 through 32. No. 65 and 66 in S-M-L-XL.

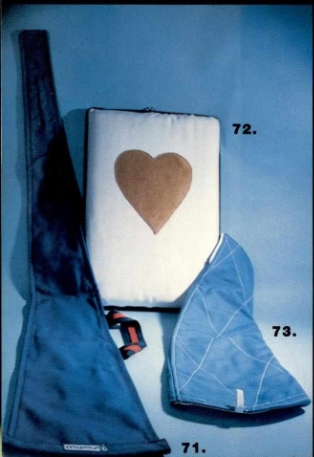
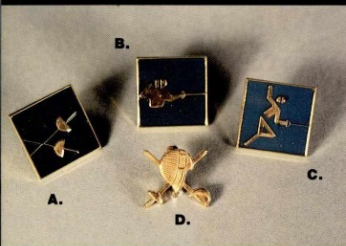


ELECTRICAL EQUIPMENT

Electrical foils and epees are listed in price sheet — Items no. 1A through 14. All foils mounted with the Leon Paul Bayonette socket unless otherwise specified. Please specify your choice.

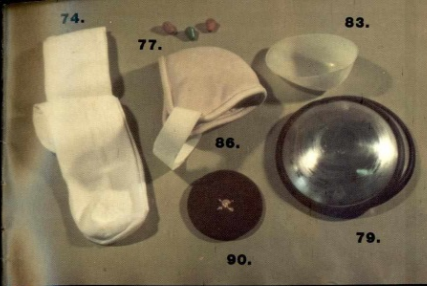
- 87. Foil-epée reels, L.P. model
- 88N. Foil-epée scorer FIE model
- 88U. Foil-epée scorer Unitec
- 88C. Foil-epée scorer L.P. club
- 89. Digital time clock
- 52A. Metallic jacket
- 15. Electrical epee body cord
- 15A. Electrical foil body cord, L.P. model (bayonette type)
- 15A2. Electrical foil body cord for 2-pronged socket
- 100. Testing kit
- 101. Mini Touché (individual scoring box)





CARRYING CASES AND MISCELLANEOUS

- 69. Equipment bag (see pg. 11)
- 69P. Equipment bag competition model, durable CORDURA, light-weight, strong with inner and outer pockets. (See pg. 12)
- 70. Equipment bag, extra large, tough 14 oz. army duck
- 71. Single weapon bag
- 72. Practice wall target
- 73. Padded practice sleeve
- 81F. Adidas fencing shoes, French
- 81G. Adidas fencing shoes, German
- 90. Lapel pins, A. B. C. D.
- 91. T-Shirts, all designs
- 92. Bumper stickers
- 95. Posters, A. B. C. D.
- 98. Stage sword, brass cup
- 99. Stage sword, steel cup

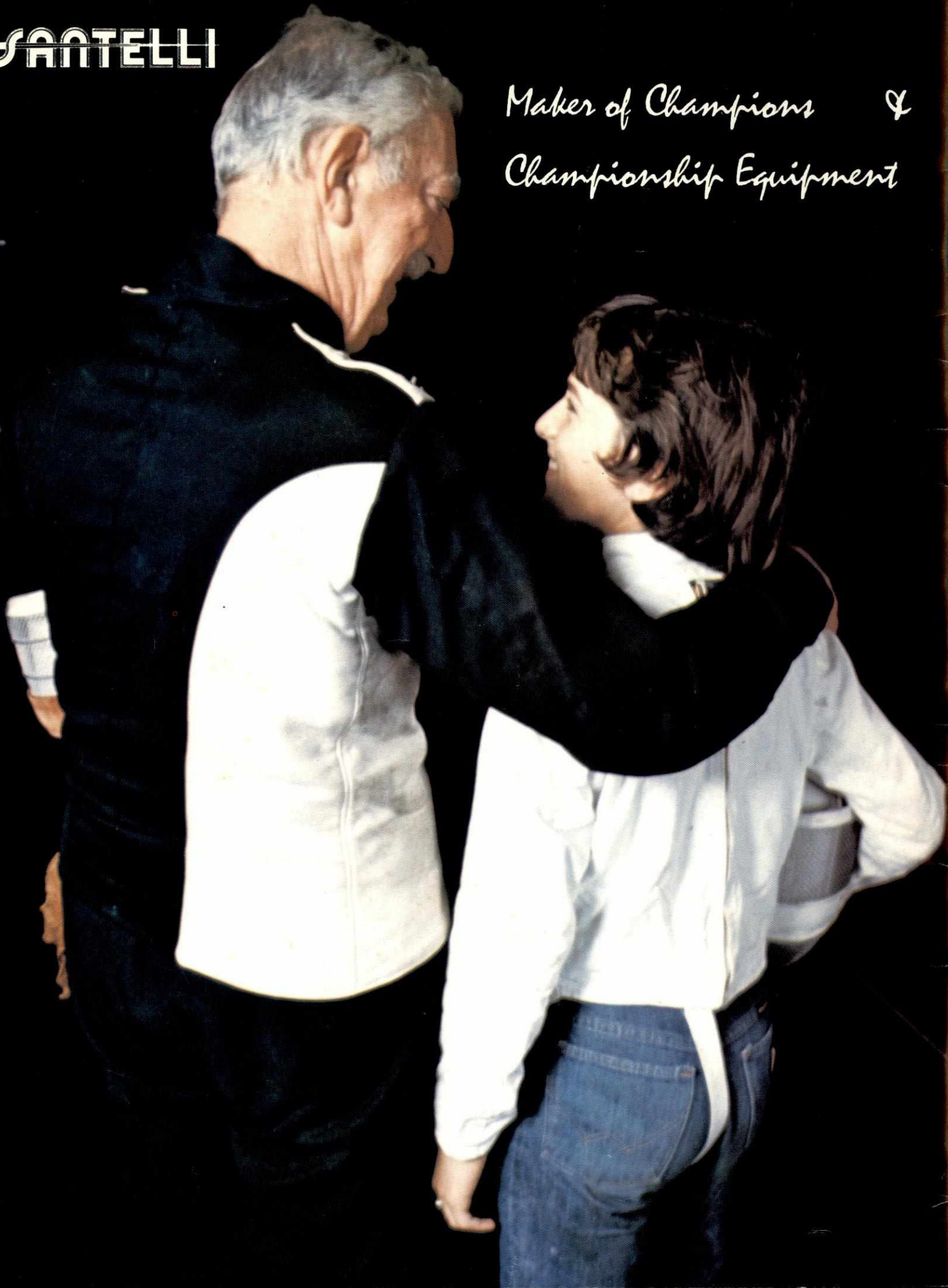


- 85. AFLA rules book
- 85A. Know the Game
- 86A. Modern Fencing, Alaux
- 90A. Practical Technician's Manual, Volkman
- 102. Foil notes, Manley
- 103. Complete Fencing, Manley
- 104. Introductory Foil, A Manual for Instructors, Berman, Hayden



SANTELLI

*Maker of Champions &
Championship Equipment*



ELECTRICAL EQUIPMENT SOCKETS, POINTS, & BODY CORDS

FGS..	Elect. foil guard socket, bayonette or 2-pronged	3.70
EGS.	Elect. epee guard socket	3.90
DP.	Dummy practice point, foil or epee (please specify)	1.70
76A.	Elect. foil point complete w/wire	6.40
76.	Elect. epee point complete w/wire	7.00
15A.	Foil body cord, bayonette	11.90
15AP.	Foil body cord, 2-pronged	12.50
15.	Epee body cord	12.20

METALLIC JACKETS

52A.	Men's metallic jacket	59.00
55A.	Women's metallic jacket	56.50

(Note: If front zipper is desired, please add \$5.50 net.)

SCORING & TESTING EQUIPMENT

PT.	Testing weight for foil or epee (please specify)	15.00
15CC.	Connecting cables, machine to reels, per pair	63.00
87.	Foil-epee reels, Leon Paul, per pair	450.00
88N.	Foil-epee scorer, Leon Paul FIE Model, w/power cord	690.00
88C.	Foil-epee scorer, Leon Paul school/club model w/batteries	299.00
88U.	Foil-epee scorer, Unitec school/club model	368.00
88TE.	Extension lamps/score indicator for model #88N	555.00
89.	Digital time clock, Unitec model	27.50
100.	Weapon and body cord tester, Unitec "mini" model	10.80
101.	Individual foil-epee practice box, Unitec "mini touche"	31.20

A PRICE LIST OF SPARE PARTS FOR ABOVE AVAILABLE
ON REQUEST.

MISCELLANEOUS

72.	Practice wall target, padded	19.00
73.	Padded epee sleeve	11.20
74.	Knee length white socks	3.50
77.	Foil tip, plastic	.20
79.	Women's breast plates, aluminum, per pair	8.40
80V.	Wrist strap, bright colored velcro	3.60
81F.	Fencing shoes, Adidas, made in France	45.00
81G.	Fencing shoes, Adidas, made in Germany	50.00
82.	Bib for mask	4.60
83.	Heel protector, plastic	1.50
84.	Score pad, team or individual	3.90
86.	Elbow protector for sabre	10.00
90.	Lapel pins, A.B.C.D.E.F	2.70
91.	T-shirts, all designs	6.00
92.	Bumper stickers	1.80
93.	Posters—"Action" or "Lady" or "Santelli" . . . 3.00 . . . "Magnan"	3.50
98.	Stage sword, brass cup	70.00
99.	Stage sword, steel cup	51.60

BOOKS

85.	AFLA rules book	3.50
85A.	Know the Game	3.00
86A.	Modern Fencing, Alaux	8.95
90A.	Practical Technician's Manual, Volkman	3.00
102.	Foil Notes, Manley	2.00
103.	Complete Fencing, Manley	OUT OF PRINT
104.	Introductory Foil, Hayden, Berman	6.50



SANTELLI

412 SIXTH AVENUE * NEW YORK, N.Y. 10011 * (212) AL 4-4053

SCHOOL AND CLUB PRICE LIST JANUARY, 1981

STANDARD WEAPONS FOILS

1.	French foil, championship	28.50
2.	French foil, Santelli	24.70
3.	French foil, collegiate w/rubber covered handle	21.00
4.	Italian foil	34.00
5.	Pistol grip foil, Belgian or American, plastic grip	27.60
7.	Pistol grip foil, aluminum handle of your choice	32.50

Note: Foils mounted w/practice elect. blades \$6.50 extra net.

EPEES

9.	French epee	37.20
11.	Italian epee	46.60
13.	Pistol grip epee, aluminum grip of your choice	42.00

Note: Epees mounted w/practice elect. blades \$3.90 extra net.

SABRES

16.	Hungarian sabre*	35.00
17.	Santelli "Special" sabre	43.90
18.	Olympic sabre*	35.00
17T.	Tournament sabre	43.90

*Mounted with alum. guards. For steel add \$1.50

STANDARD BLADES

19.	French foil blade	11.30
19Q.	French foil blade, premier quality	14.00
20.	Pistol grip foil blade	11.30
20Q.	Pistol grip foil blade, premier quality	14.00
21.	Italian foil blade	11.80
22.	Sabre blade	13.10
22Q.	Sabre blade, premier quality	21.00
23.	Epee blade, French, pistol or Italian	20.00

WEAPON PARTS GUARDS & PADS

25.	Italian foil guard, steel or alum.	13.70
26.	French foil guard, steel or alum.	4.80
28.	French epee guard, alum.	7.10
30.	Italian epee guard, steel	17.50
31.	Sabre guard, Hungarian, or Olympic, Alum.	13.50
31S.	Sabre guard, tournament model or Santelli "Special"	15.00
32.	Sabre guard, Hungarian or Olympic, Steel	15.00
68F.	Guard, pad, felt	.40
68P.	Guard pad, plastic EPEE 1.10 FOIL65

**** PLEASE SPECIFY LEFT OR RIGHT HANDED ****

HANDLES & POMMELS

33. French foil handle, cord wound	4.80
33L. French foil handle, leather wrapped	5.10
34. Italian foil handle, cord wound or carved plastic	4.80
35. French epee handle, cord wound	5.30
35L. French epee handle, leather wrapped	5.50
36. Sabre handle, cord wound or carved plastic	4.90
36R. Sabre handle, rubber covered	7.80
36L. Sabre handle, leather wrapped	5.50
37. Pistol handle, Belgian or American, plastic	6.80
37A. Pistol handle, aluminum, your choice of model	10.80
38. French pommel, foil or epee	2.30
39. Sabre pommel	1.60
40. Pistol grip pommel	.95
41. Italian pommel	2.00

GLOVES

42. Foil glove	13.20
42A. White foil glove	14.40
43. Sabre glove	18.30
44. Foil-sabre glove	20.50
45. Foil-epee glove	18.00
46. 3-weapon glove	19.50

MASKS

49. Foil mask, collegiate model	26.00
48. 3-weapon mask, natural cowhide trim	33.00
48W3-weapon mask, white leather trim	36.00
47. Foil-epee mask	30.00
47I. Foil mask, international model, insulated	36.00
50. Sabre mask, natural cowhide trim	39.00
50W. Sabre mask, full white leather trim	42.00

COMPETITION JACKETS

51V. Men's 3 weapon jacket, 14 oz. duck, velcro closure	38.00
64. Men's 3-weapon jacket, 100% nylon stretch, front zip	54.00
52. Men's foil jacket, 10 oz. duck, side buttons	35.50
63. Men's foil-sabre jacket, 100% nylon stretch, front zip	52.00
52B. Men's sabre jacket, padded 10 oz. duck, velcro closure	44.50
55W. Women's 3-weapon jacket, padded 10 oz. duck, velcro	39.00
62. Women's 3-weapon jacket, 100% nylon stretch, front zip	47.50
55C. Women's foil jacket, padded 10 oz. twill, side buttons	34.80

*Jackets #63 and #52B are waist length. All others are groin length, but can be had cut to waist at no extra charge. Jackets #52 or #55C can be made with velcro closure, add \$3.00. For jackets or knickers made to measurements, add \$25.00 net.

TRAINING JACKETS

53. Men's practice jacket	27.60
54. Men's half jacket	24.50
56. Women's practice jacket	28.80
57. Women's half jacket	25.00

**** PLEASE SPECIFY LEFT OR RIGHT HANDED ****

PLASTRONS

58. Plastron (quilted chest protector)	13.50
58S. Safety plastron (underarm protector, men & women's)	12.80
58I. Instructor's plastron with leather	43.90

KNICKERS

59. Men's 3-weapon knickers, 14 oz. duck	27.60
60. Men's 3-weapon knickers, 100% nylon	33.00
60. Men's foil-sabre knickers, 10 oz. duck	26.30
61W. Women's 3-weapon knickers, 10 oz. duck	25.00
65. Women's 3-weapon knickers, 100% stretch nylon	31.80
61. Women's foil knickers, 10 oz. twill	24.00

CARRYING CASES

69. Equipment bag, standard model	18.80
69P. Equipment bag, competition model	48.00
70. Equipment bag, extra large	36.00
71. Single weapon bag	8.60

EQUIPMENT FOR THE YOUNGER SET (ages 5 to 12)

3J. Junior French foil	21.00
49J. Junior foil mask	26.00
42J. Junior foil glove	12.60
53J. Junior jacket, boy's & girl's	20.50
69J. Junior equipment bag	16.50

ELECTRICAL EQUIPMENT FOILS, EPEES, & BLADES

1A. French elect. foil	41.00
4A. Italian elect. foil	50.00
5A. Pistol grip elect. foil, Belg. or American, plastic grip	41.40
7A. Pistol grip elect. foil, aluminum grip of your choice	45.80
10. French elect. epee	52.60
12. Italian elect. epee	62.00
14. Pistol grip elect. epee, aluminum grip of your choice	56.40
19A. Elect. foil blade complete, Fr., Ital., or pistol grip	24.00
19P. Practice elect. foil blade w/dummy tip	17.80
19U. Unwired elect. foil blade, no tip	16.10
24. Elect. epee blade complete, Fr., Ital., or pistol grip	31.00
24P. Practice elect. epee blade w/dummy tip	23.90
24U. Unwired elect. epee blade, no tip	22.20

OUR PREMIER QUALITY "GOLDEN" BLADE IS AVAILABLE FOR FOILS #1A, 5A, 7A AND REPLACEMENT BLADES #19A, 19U, 19P (FRENCH OR PISTOL TANGS). ADD \$3.50 NET. ON ITEMS #19A THROUGH #24U, PLEASE SPECIFY WHETHER FRENCH, PISTOL, OR ITALIAN STYLE. IF PISTOL GRIP, PLEASE SPECIFY TANG LENGTH DESIRED.

ORDERS WILL BE SHIPPED ONLY IF FULLY PREPAID,
OR C.O.D. WITH 20% ADVANCE DEPOSIT. PREPAID
SHIPPING COSTS FOLLOW:

	EAST OF MISS.	WEST OF MISS.
\$.01 to \$10.00	12%	17%
\$ 10.00 to \$50.00	7%	12%
\$ 50.01 to \$100.00	4%	5%
\$100.00 and over	3%	4%

ORDER FORM

Ordered By: NAME

ADDRESS

CITY STATE ZIP

santelli

412 SIXTH AVENUE
NEW YORK, N.Y. 10011

(212) 254-4053

[illegible]

PLEASE DON'T FORGET:

Size
Right or Left handed
Tax (N.Y. City or State residents only)
Service charge (for orders under \$20.00)
Zip Code

*FOR STOCK SIZES, INCLUDE SIZE IN DESCRIPTION COLUMN.
DESCRIBE CUSTOM SIZING ON REVERSE SIDE OF THIS FORM.

Sub-Total
Service Charge
N.Y. Sales Tax
(see revs. side) Shipping

Grand Total

For custom uniforms please take the following measurements:

A: NECK
B: CHEST:
C: WAIST:
D: FRONT LENGTH (bottom of collar to tip of groin).....
E: ARM LENGTH (shoulder seam to wrist - with bent arm).....
F: INSEAM (groin to below knee cap).....
G: HIPS
H: KNEE (around knee below knee cap).....
I: HEIGHT:
J: WEIGHT:.....
K: SHOULDERS (across from seam to seam).....

SHIPPING INFORMATION:

To compute shipping rates use the table below:

	East of Miss. River	West of Miss. River
\$.01 to 10.00	12%	17%
10.01 to 50.00	7%	12%
50.01 to 100.00	4%	5%
Over \$100.00	3%	4%

N.Y. City or N.Y. State residents must include sales tax.

A Service charge of \$1.00 must be included for orders under \$20.00.

COD shipments require a 20% advance deposit.